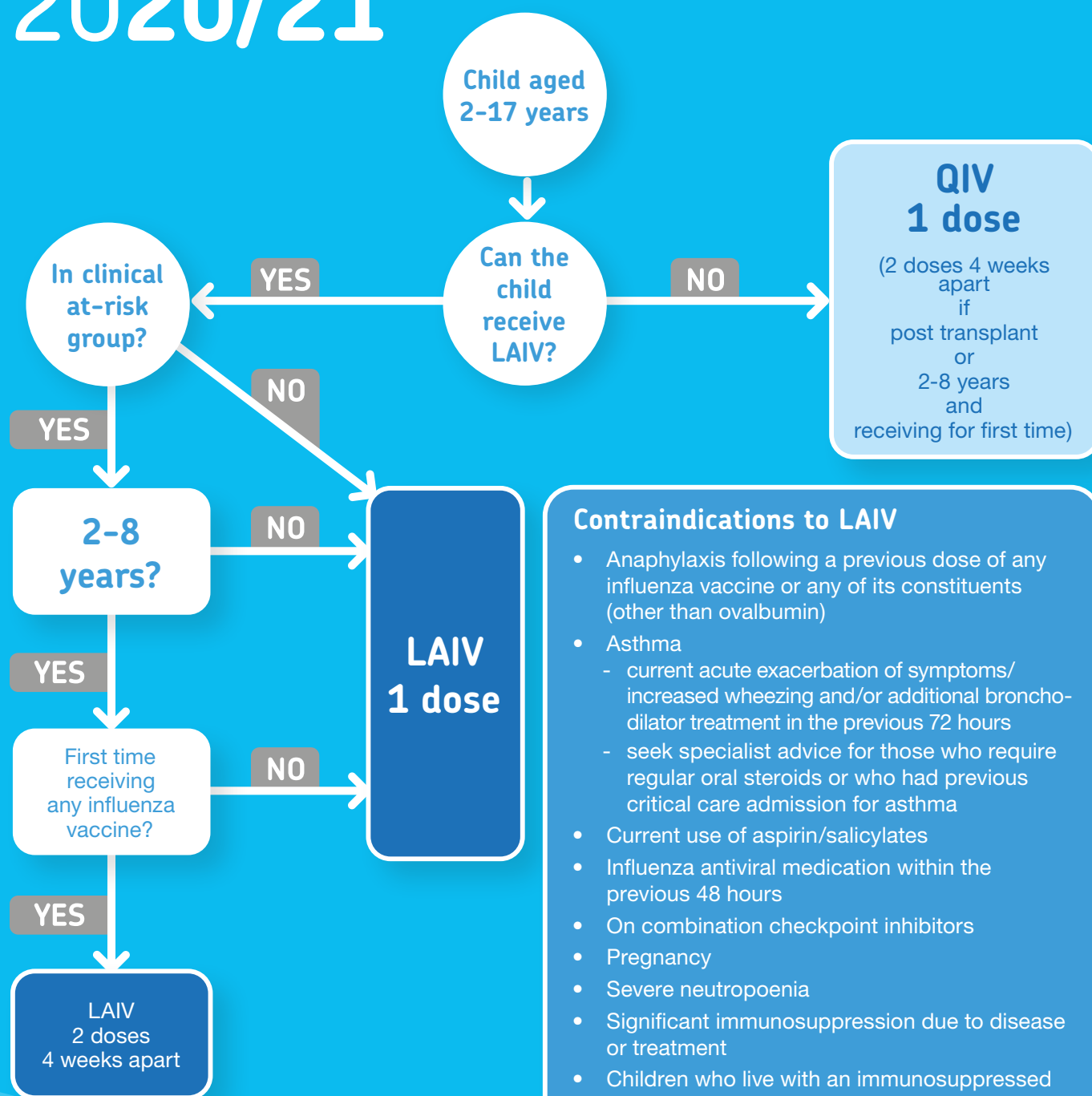


Flu Vaccine for children 2020/21



Contraindications to LAIV

- Anaphylaxis following a previous dose of any influenza vaccine or any of its constituents (other than ovalbumin)
- Asthma
 - current acute exacerbation of symptoms/ increased wheezing and/or additional broncho-dilator treatment in the previous 72 hours
 - seek specialist advice for those who require regular oral steroids or who had previous critical care admission for asthma
- Current use of aspirin/salicylates
- Influenza antiviral medication within the previous 48 hours
- On combination checkpoint inhibitors
- Pregnancy
- Severe neutropenia
- Significant immunosuppression due to disease or treatment
- Children who live with an immunosuppressed person requiring isolation (i.e. post haematopoietic stem cell transplant)
- Those post cochlear implant until the risk of CSF leak has resolved - consult with the relevant specialist
- Those with a cranial CSF leak

QIV: Quadrivalent influenza vaccine (split virion, inactivated)

LAIV: Live attenuated influenza vaccine. Fluenz Tetra