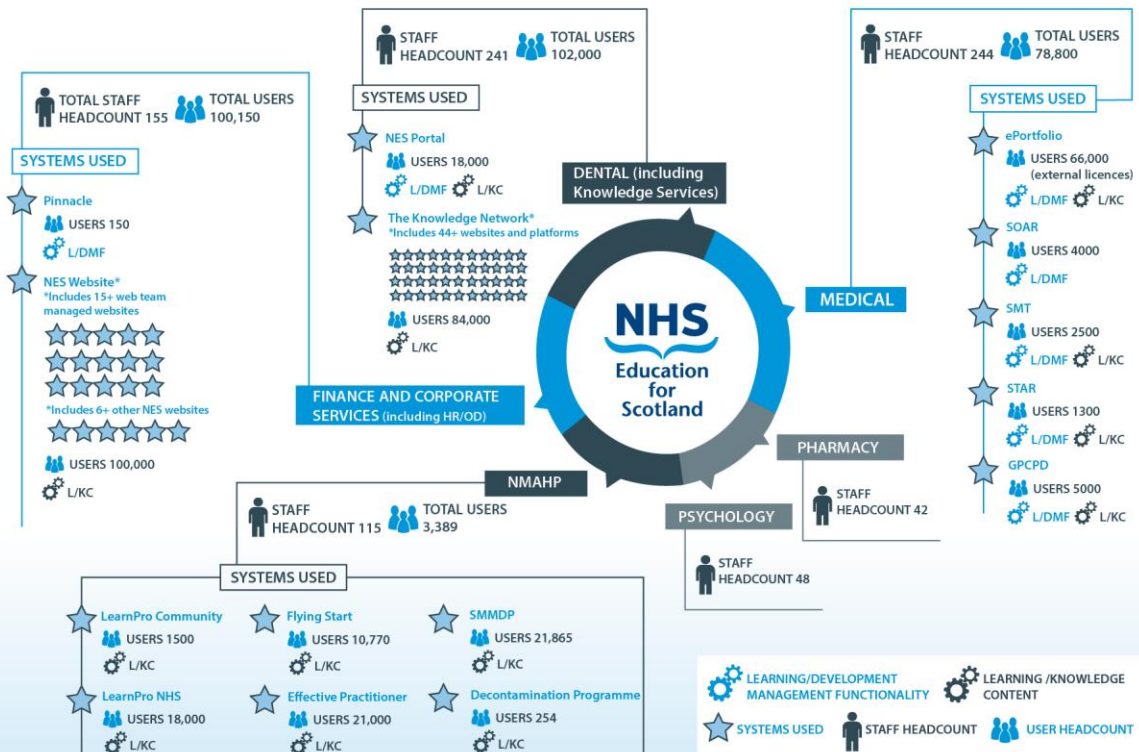




Workforce Planning in the Cloud

Christopher Wroath

Director of NES Digital, NHS Education for Scotland





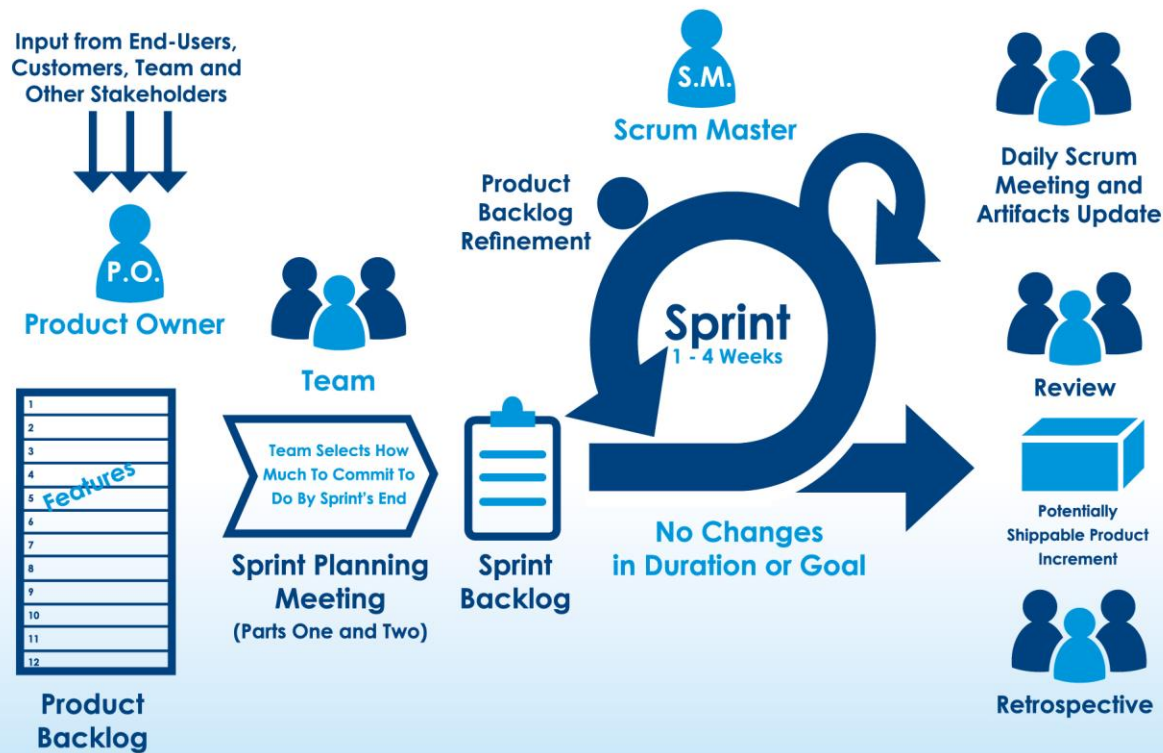
Change the way people work



**Everything
as a Service**



nesdigital Agile Process

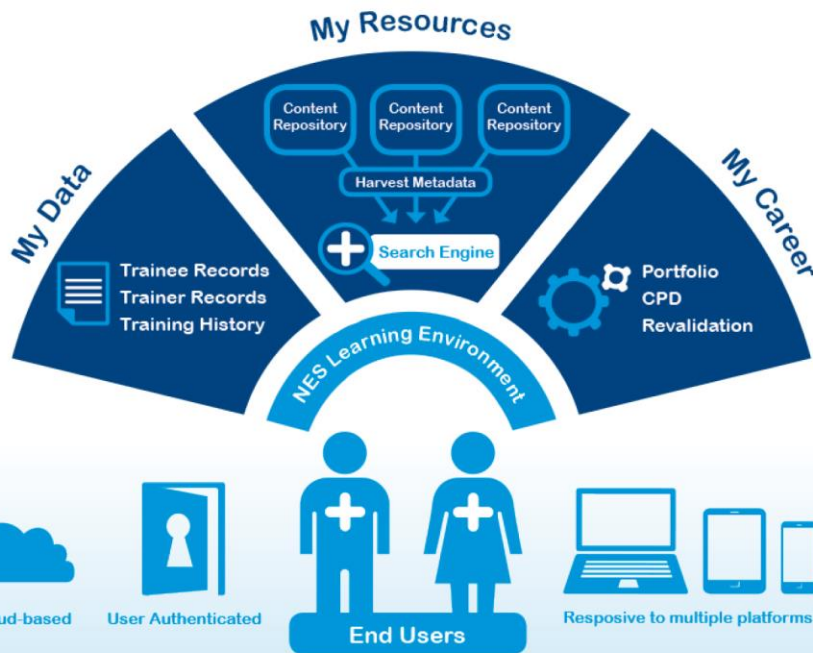




Content Administrators



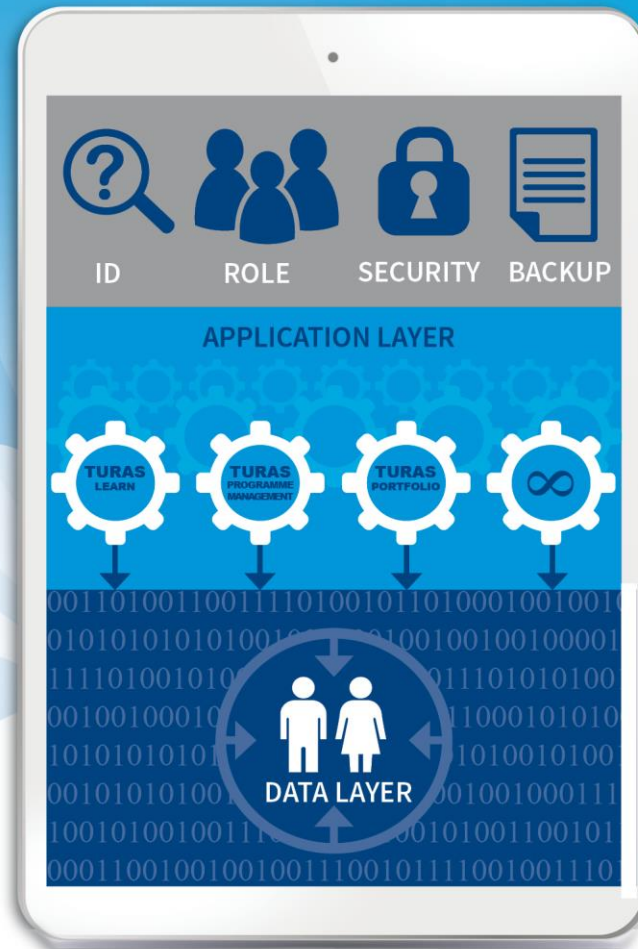
Content Management Tools and Applications



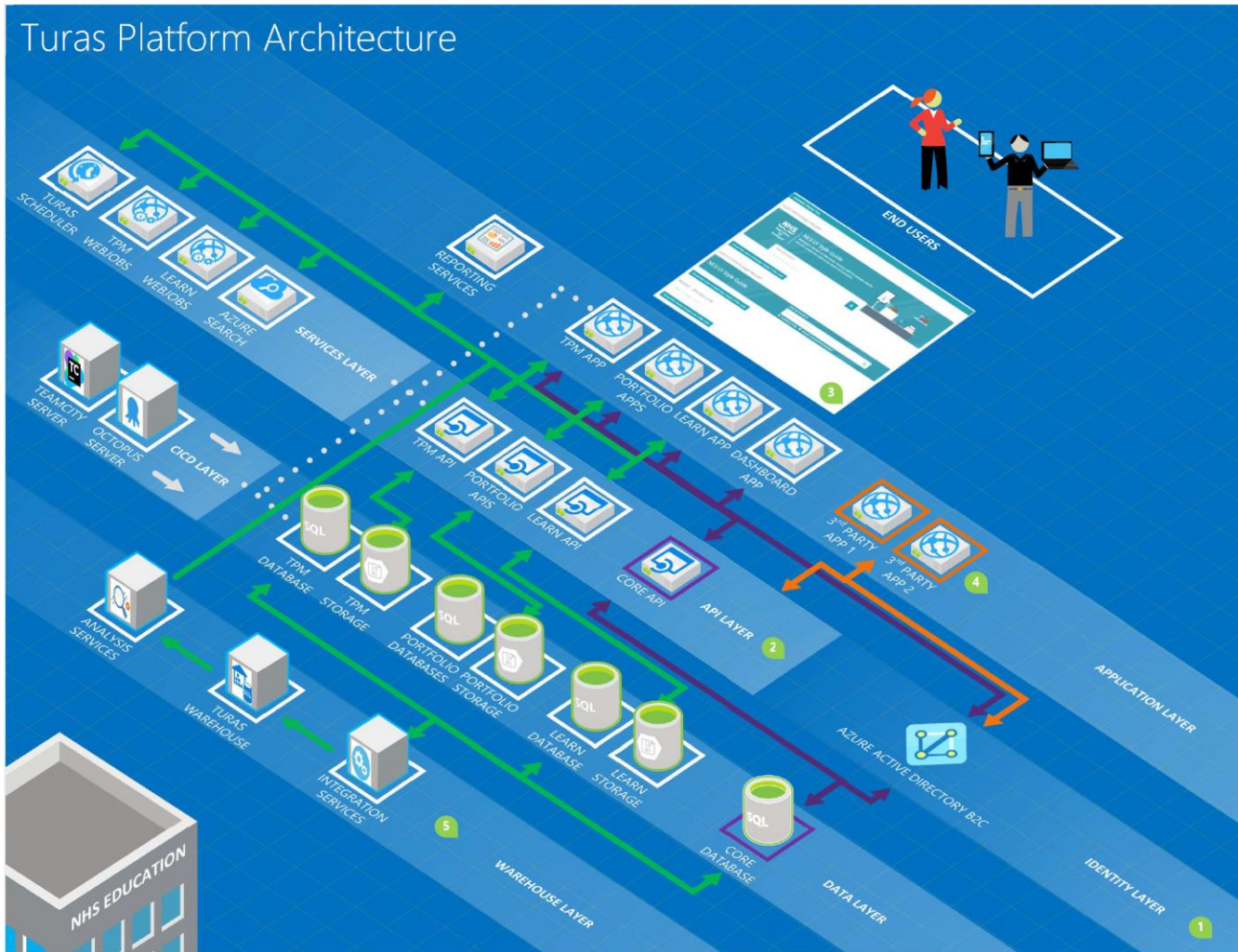
The opportunity
for NES to support
people



Inside **TURAS**

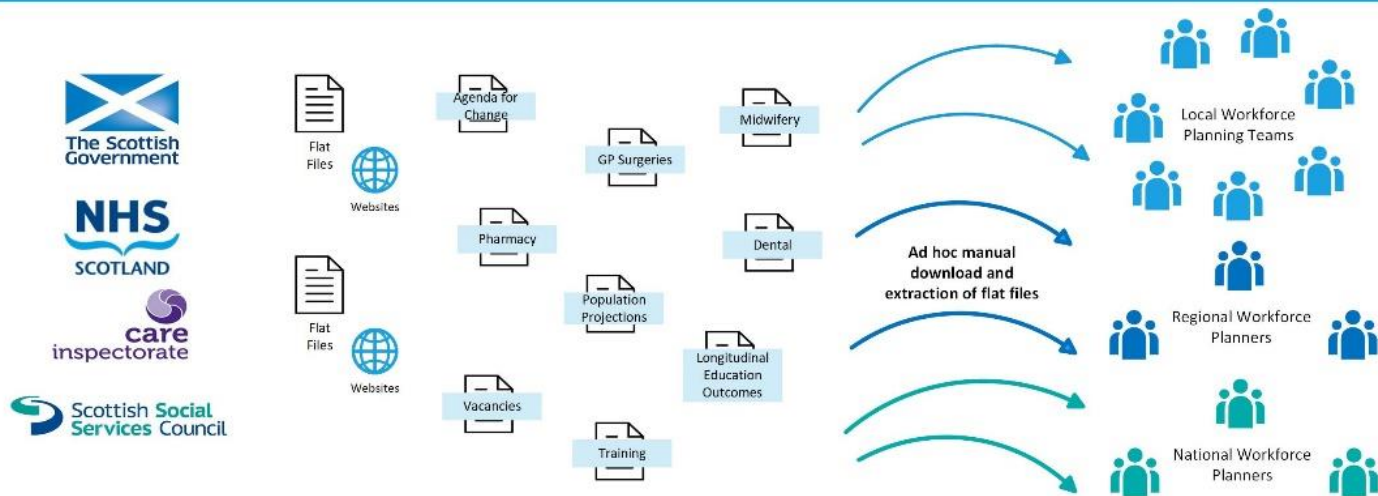


Turas Platform Architecture

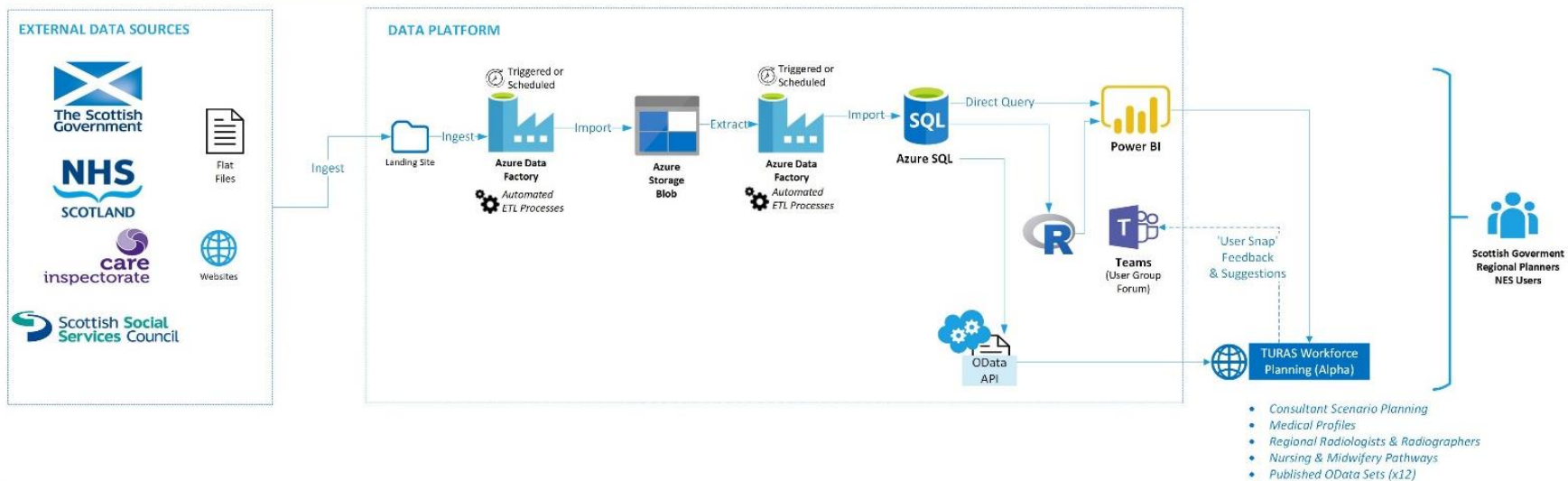


- 1 Turas users enjoy single sign-on using a secure, centralised identity management solution.
- 2 Applications can easily share data with other applications via a set of secure APIs.
- 3 All applications use a UI framework and style guide to give a consistent and familiar user experience.
- 4 3rd party applications can be developed and "plugged in" to the Turas architecture by installing specially created packages that provide functionality such as integration to the identity management system and a client to access the Turas APIs.
- 5 Data is pulled into the Turas Warehouse where it can be reported from using SQL Server Reporting Services

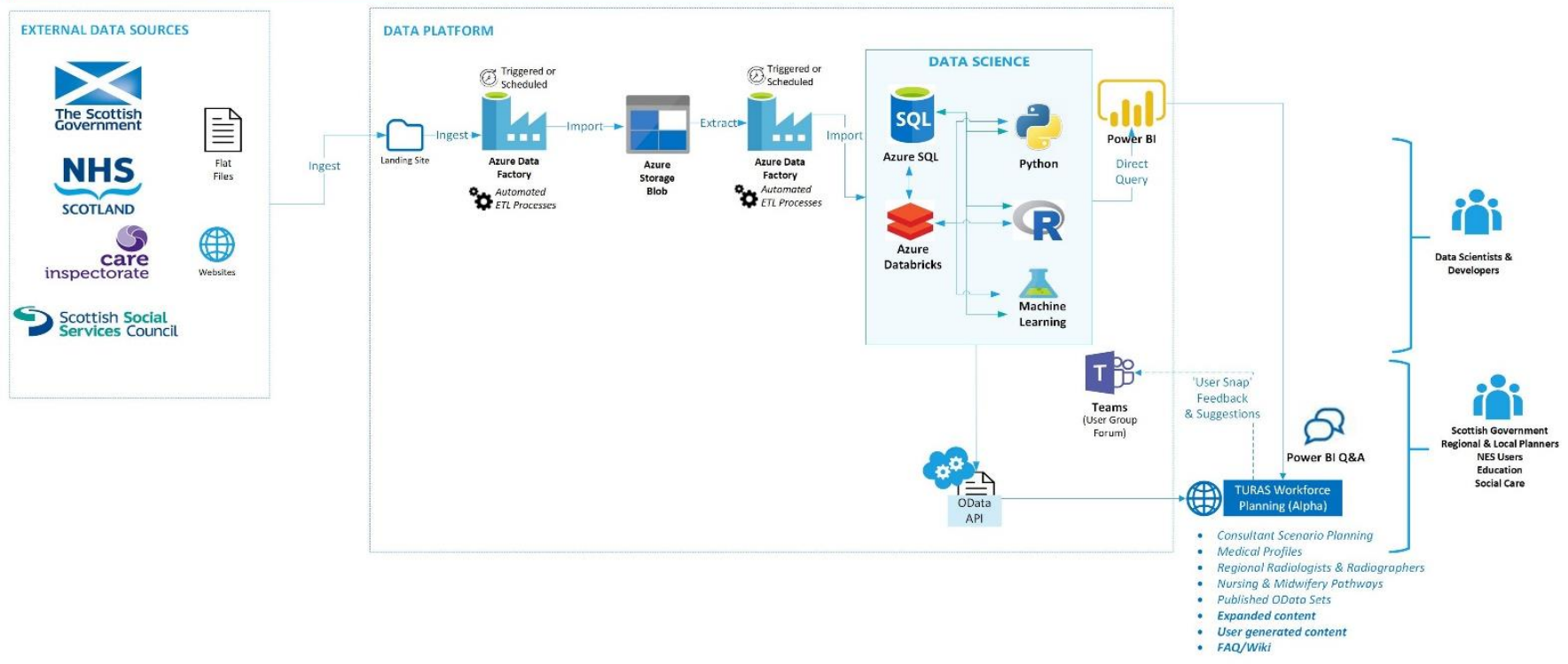
LEGACY MODEL



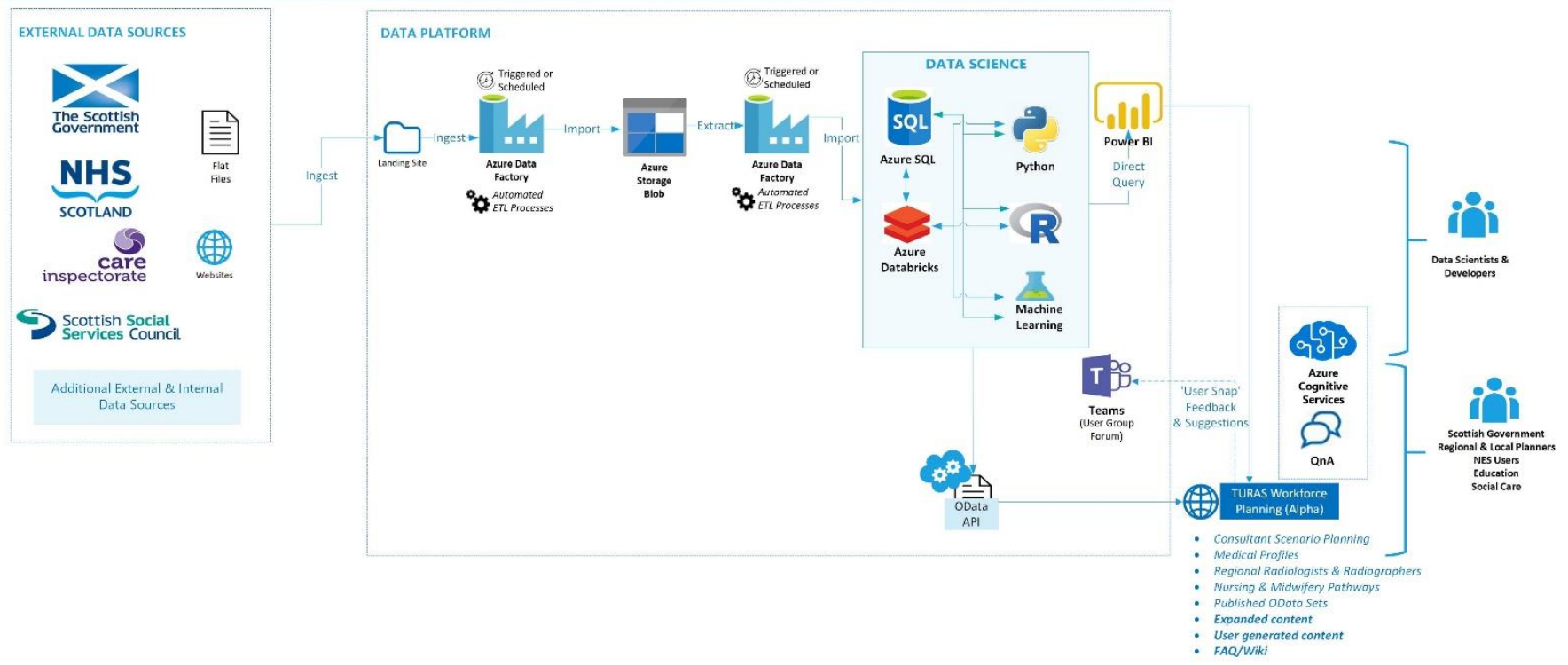
TRANSFORMATION PHASE 1 (DECEMBER 2018)



TRANSFORMATION PHASE 2 (APRIL 2019)



TRANSFORMATION PHASE 3 (> APRIL 2019)



Data

Workforce Data - Data Feeds

The data used by NES to create the reports found on the Reports tab were created using the data sets available as OData feeds on this page (the [red links](#)). OData (Open Data Protocol) is a Microsoft standard allowing data to be accessed via websites in a consistent manner, which can then be streamed into other applications and reporting tools. To connect to the data please copy the relevant [red link](#) below and follow the instructions for your selected tool. Please find links to the instructions for some of the most commonly used reporting tools below.

- **Power BI** - <https://docs.microsoft.com/en-us/power-bi/desktop-connect-odata>
- **Excel** - <https://support.office.com/en-us/article/connect-to-an-odata-feed-power-query-441a94d-9392-488a-96a9-739b6d2ad500>
- **Tableau** - https://onlinehelp.tableau.com/current/pro/desktop/en-us/examples_odata.htm
- **Qlik** - https://help.qlik.com/en-US/connectors/Subsystems/Web_Connectors_help/Content/Connectors_QWC/Data-Source-Connectors/OData-Connector.htm

You can find more technical info about how OData works here : <https://www.odata.org/getting-started/basic-tutorial/>

If you are getting errors when attempting to connect to a feed in Excel, please work through the following steps:

- Open Excel
- Click on the "Data" tab
- Click "Get Data"
- Click "Query Options"
- Click "Clear Cache" then "OK"
- IMPORTANT - close Excel completely and re-open it then try again

afc

Agenda for Change pay bands and points

<https://nesworkforceplanningapiint.azurewebsites.net/odata/afcpaybands>

ashe

Annual Survey of Hours and Earnings: Gross Hourly Pay, ghp, by year region and SOC code. Deflators are included to calculate real gross hourly pay. Source: <https://www.ons.gov.uk/employmentandlabourmarket/peopleinwork/earningsandworkinghours>

<https://nesworkforceplanningapiint.azurewebsites.net/odata/ashe>

ci

These are data downloaded from the Care Inspectorate's datastore, the data are from 31 January 2018. Source: <http://www.careinspectorate.com/index.php/statistics-and-analysis/data-and-analysis>

Consultant Scenario Planning



Reports

Consultant Scenario Planning

An alternative version of the existing scenario planning tool for medical consultants that allows alterations to the consultant workforce inflow of doctors trained in Scotland or from other sources.

[Consultant Scenario Planning](#)

Medical Profiles

The medical profiles report uses data from several different sources to develop a picture of PG medical training in Scotland.

[Medical Profiles](#)

Regional Radiologists & Radiographers

The regional radiographers report uses NHS Scotland information to examine the stocks and flows of radiographers and radiologists in each region and examines the trends in the ratio of radiographers to radiologists between the regions.

[Regional Radiologists & Radiographers](#)

Nursing & Midwifery Pathways

Nursing & Midwifery Pathways uses data from several sources to develop a picture of pre- and post-registration nursing and midwifery education and the transition between education and employment in NHS Scotland.

[Nursing & Midwifery Pathways](#)